

Melt crystallization technology

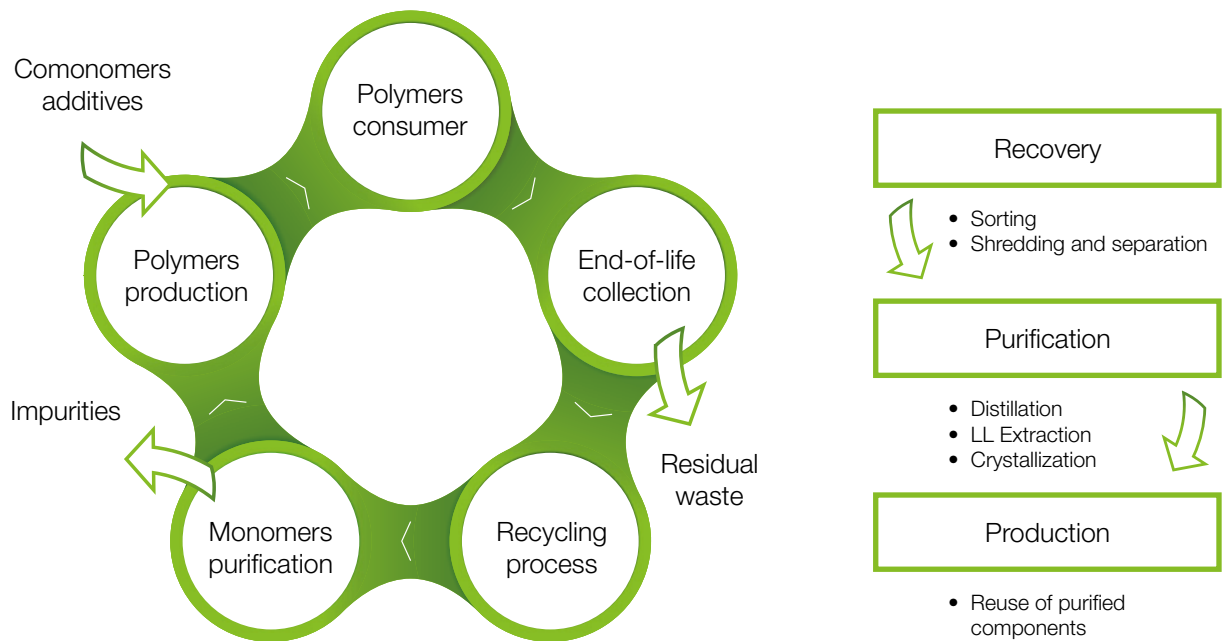
## Caprolactam purification from **reclaimed polyamide**



# Recycling loop

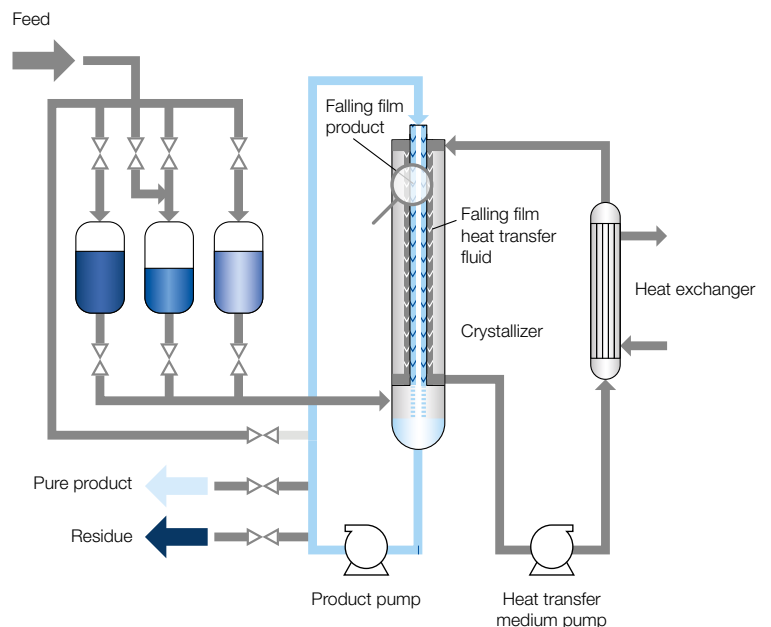
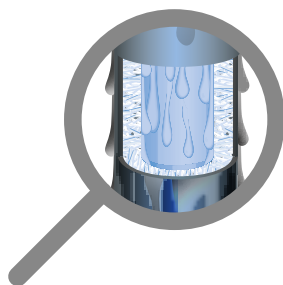


Thousands of tons of waste are burned or disposed every year. Therefore, the development of recycling methods that allow the recovery of components that can be used is key. Indeed all kinds of impurities accumulate during the plastic goods lifetime and fractional melt crystallization is the decisive process step to recover a truly virgin monomer. This is the most suitable technology to tackle this challenge.



## Falling film crystallization

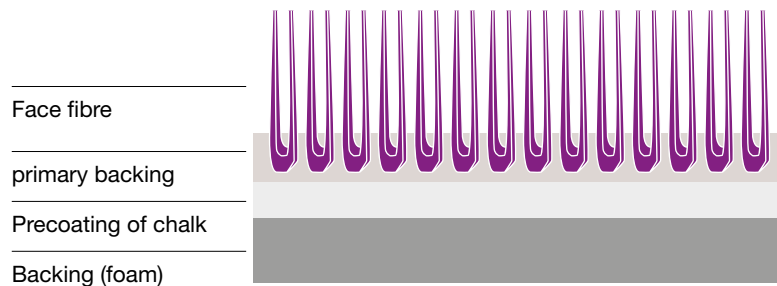
Falling film crystallization is characterized by three phases of operation: filling of molten feed and crystal layer formation; partial melting of the crystal layer and the final melting phase. The crystallizer is the key component to remove critical impurities.



# Reclaimed polyamide and caprolactam purification



## Case study floor carpeting recycling

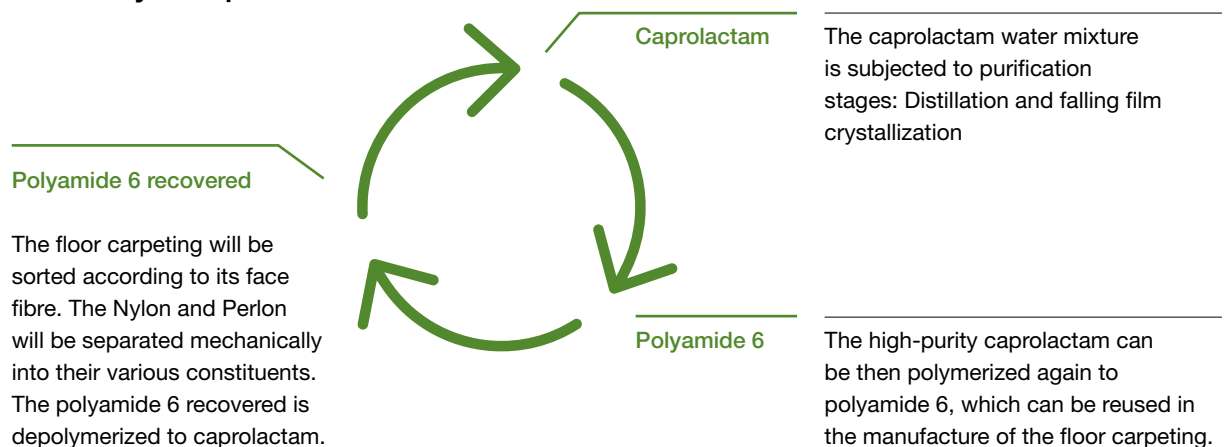


The face fibre of about

# 60%

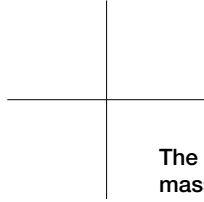
of all used floor carpeting consists of the polyamides Perlon and Nylon.

## Recovery and purification



## Take away

- > This recycling operation is more energy efficient than the traditional carpet manufacture where the caprolactam production comes from crude oil (fossil); there is no use of solvents and sulfur components to be disposed of.
- > Sulzer layer crystallization is one of the decisive processing steps in this recycling operation.
  1. It is a proven technology with very low risk.
  2. Increased quality and recovery yield without compromise.
  3. Operation friendly.
  4. No maintenance.



**The Sulzer Chemtech division is the global market leader in innovative mass transfer, static mixing and polymer solutions for petrochemicals, refining and LNG.**

---

Chemtech is also leading the way in ecological solutions such as biopolymers as well as textile and plastic recycling, contributing to a circular economy. Our product offering ranges from technology licensing to process components all the way to complete separation process plants. Customer support ranges from engineering and field services to tray and packing installation, tower maintenance, welding and plant turnaround projects – ensuring minimal downtime.

---

E00836 en 1.2023, Copyright © Sulzer Ltd 2023

This brochure is a general presentation. It does not provide any warranty or guarantee of any kind. Please, contact us for a description of the warranties and guarantees offered with our products. Directions for use and safety will be given separately. All information herein is subject to change without notice.

